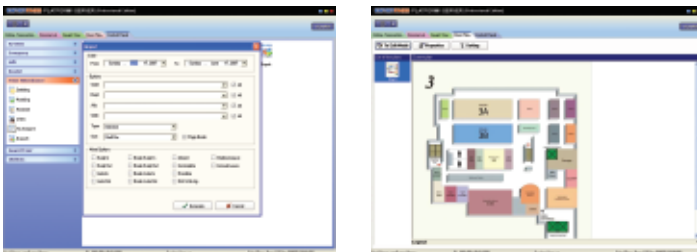
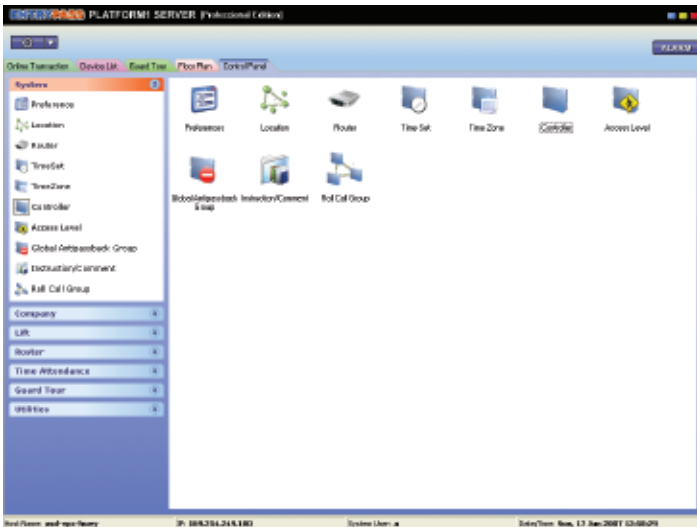


## PLATFORM1 Professional Edition Integrated Access Control Software



### Overview

At initial conception, EntryPass Platform1 Access Control System was developed with enterprise capabilities in mind. It is a powerful client server based software application that provides all the features required in the most demanding application.

EntryPass Platform1 Access Control is modular in nature, it allows future expansion of its functionality based on user's needs to keep up with day to day changes that occur within small or large enterprise. The system can grow from just a few doors to thousands of doors on distributed sites.

The system uses client server architecture based on industry standard operating system, networks and protocols. The architecture supports hardware and software that link nodes to a single integrated system.

The system provides an easy to navigate tabbed menu system to drive user to the desire location with just a few clicks on the mouse button.

### Key Features

#### Life Time Guarantee

EntryPass software provides user with life time guarantee on software upgrades with the latest features and functions available.

#### Online Guard Tour

The Online guard tour feature will provide REAL TIME monitoring and reports on security guard status with smart email and sms notification for more effective management control.

#### Lift Access Management

The integrated lift access management can support up to 64 floor floors.

#### User Friendly

The system built in with window menu driven graphical user interface which make it very simple to navigate from one place to another.

#### Multi Language

The multi language feature supports multiple international languages and can be easily customize to any local languages as required.

#### Email & SMS Notification

The system will automatically notify pre-defined users via emails and SMS on alarm triggered.(Optional GSM Module Required.)

#### Interactive Floor Plan

Users can visualize the graphical GUI floor plan and interactive icons can be added easily to represent doors and alarm points in the system for real time control of the system devices with a mouse click.

#### Emergency Roll Call

During emergency evacuation, users can utilize this features to find out who is in the building.

#### Client Server / Multi Workstation

The system support 1 server and 5 client licenses for remote communication and monitoring.

#### Comprehensive Time & Attendance

Comprehensive Time and Attendance feature inclusive cross overnight shift, yearly roster schedule and offence notification through email etc.

#### Multiple Application

The system support multiple application modes eg. Door access, lift access, turnstile access, car park barrier access and etc.

#### Communication Protocol

The system support multiple communication protocols inclusive RS-232, RS-485 and TCP/IP.

#### Software integration

The System Exporter tools makes integration with third party software very easy by exporting data into standard text or EXCEL format.



## Technical Specification

### Door Access Control

- Support up to 8 Communication Bus
- Each communication bus can connect up to 16 controllers
- Expandable to up to 2304 Doors (With S9000 Multi-Doors Controller)
- Support both single door or two doors mode
- Support multiple access application eg. Door / Car Park / Turnstile Barrier
- Interactive Graphical Floor Plan
- Selectable Fire Door Release
- Alarm even prioritization
- Support remote branch communication for transaction polling
- Support both Local and Global Antipassback
- Support auto antipassback reset
- Support card expiry checking
- Real time device monitoring
- Audit trail logging
- Support email and SMS notification (Optional GSM Module for SMS)

### Time and Attendance

- User definable work hour setting
- Support over-night shift
- Support Yearly Roster Planning
- Support various reading mode (In reader only / In & Out reader)
- Time and Attendance data exporter for 3rd Party Integration
- Time altering by authorized personnel
- Work hour and overtime hour calculation
- Comprehensive reporting tool

### Lift Access Management

- Configurable Lift Access Level
- Configurable Floor Access Level
- Support up to 64 floors

### Online Guard Tour

- Utilizing the same readers from the access control system
- Real time monitoring on route status
- Support email and SMS notification for early visit / late visit (Optional GSM Module for SMS)
- Comprehensive reporting tool

### System Requirements

Make sure that the computer on which you are installing the software meets the following requirements:

- Operating Systems: 2000 / XP Professional
- Processor: Pentium IV at 2000 MHz (minimum) / Pentium IV at 3000 MHz (recommended)
- RAM: 512 MB RAM (minimum) / 1024 MB RAM (recommended)
- Minimum free hard disk space: 4 GB
- Screen resolution: 1024 x 768
- Graphic adapter: 32 MB
- 48X DVD/CD-ROM drive

## Available Controllers



### MINI

Integrated Single Door Controller Built in with proximity / MIFARE reader  
HID *iclass* reader



### S2100

2 doors controller



### S2000

2 doors hybrid controller  
Built in with 4 supervised inputs and 3 relay outputs



### S9000

9 doors hybrid controller



### N2000

2 doors TCP/IP hybrid controller



### L1000

Elevator/Lift controller



### PC Communicator

Built in with RS-485 Converter



### EP.DFP

I/O Controller  
8 inputs x 8 outputs  
RS-485